

New B League Local Turnpoints

I have created an additional three local turn-points to fill some gaps all of which will be valued at 40 points before handicap.

They are:

2DB Deeford Bridge, 5352.983N,00232.000W, "Bridge over River Hodder"

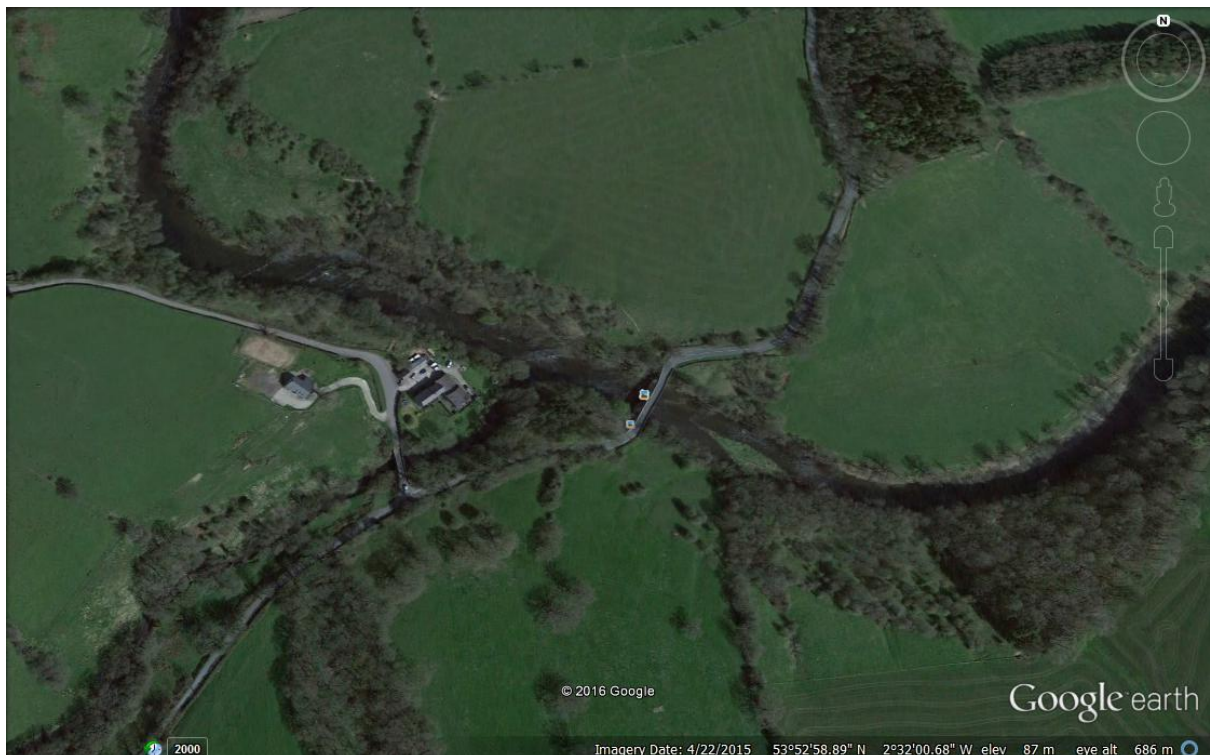
2SP Stirk Pond,5354.533N,00242.617W,"Fishing Pond north of Calder Vale",

Longridge Golf Club",5350.783N,00234.233W,"Club House south of main road"

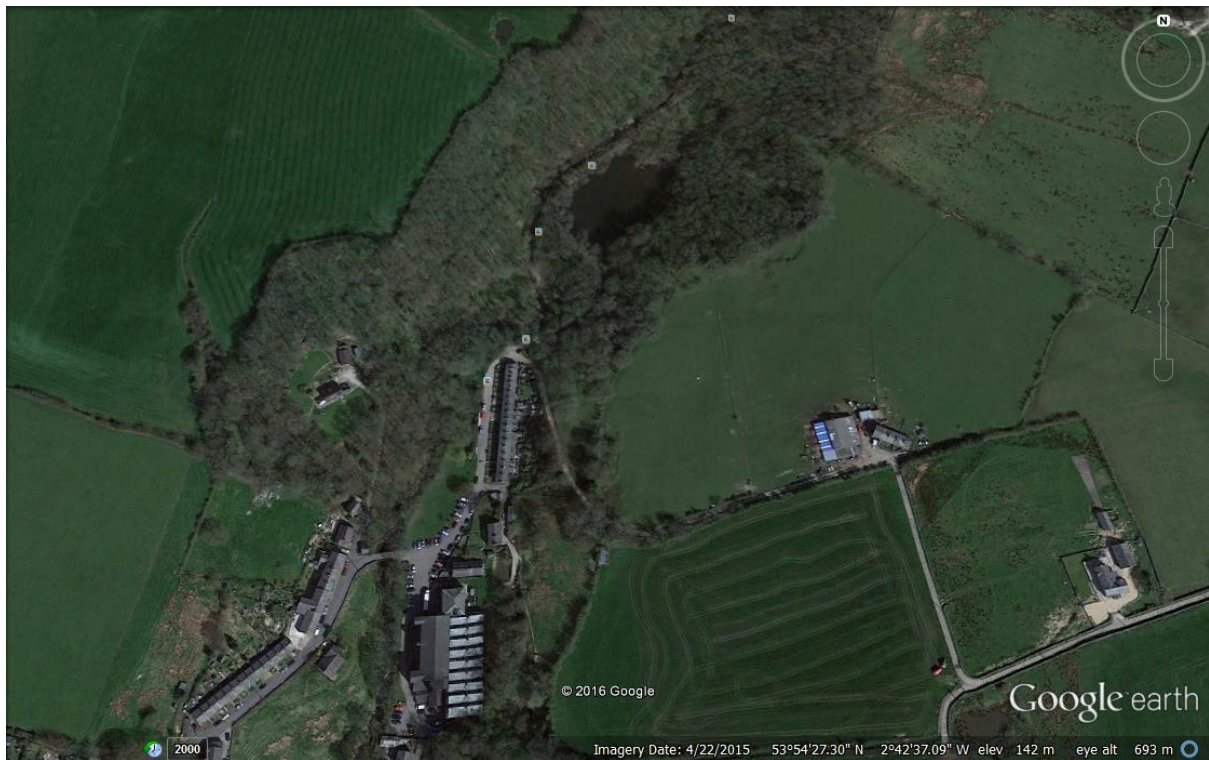
The full list will be available as of 1st October on the league sheet links as well as the clubs website in due course

The pictures below show the new ones taken from a height of approx 2000' on Google Earth

2DB - Deeford bridge - this is fairly easy to see. Directly east of Chipping and is the road bridge over the River Hodder



2SP Stirk Pond is north of the village of Calder Vale which is south of Barnacre Reservoir



2LG - Longridge Golf Club - This is the club house (the long building) on the road south of the course.



Have Fun

Phil Punt